



# SPECTRA-CON GROUP INC.

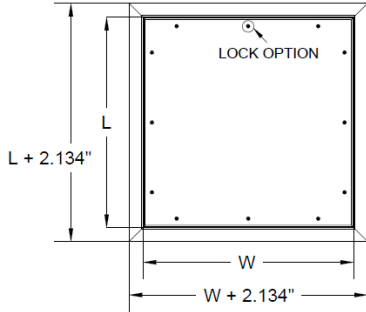
## CONCEALED ACCESS DOORS



## S-CON SERIES

Concealed Access Door with Aluminum Frame and Mold-Tough Drywall Inlay (For All Drywall Surfaces)

FRONT



### Specifications

**Material:** Mill Finish Aluminum extrusion with mold tough drywall inlay.

**Door and Hinge:** Fully removable door with concealed pivot hinge.

**Application:** Ceilings or Walls (For wall applications hinge MUST be located at the bottom of the panel).

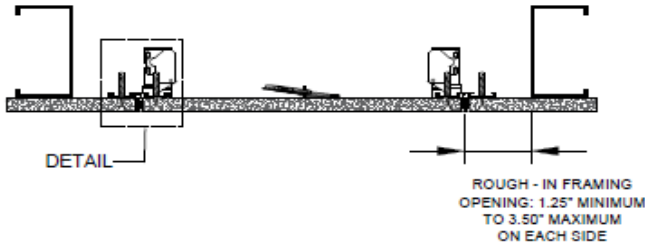
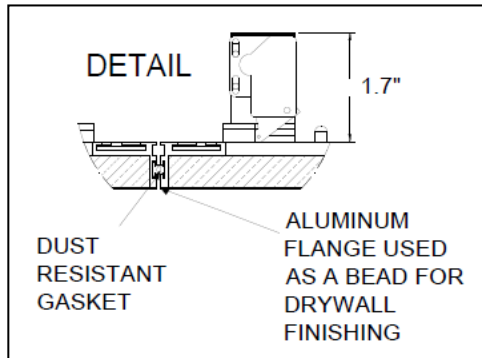
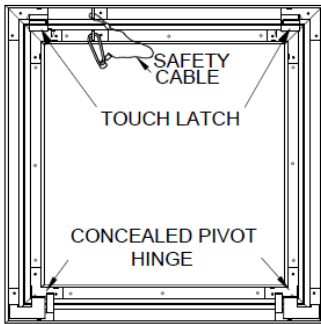
**Standard features:** Concealed Touch Latch, Mold-tough drywall, Safety cable, Dust and Moisture Resistant Gasket

**Optional features:** Screwdriver cam latch, Key cam latch, Magnetic cam latch, any type of 1/2" or 5/8" gypsum board inlay.

Custom sizes, double leaf and multiple leaf options available upon request.

Hinge location is the last 2 digits of the product ID.

REAR



Door Opening Size in inches	Door Opening Size in mm	Weight for 1/2" Drywall	Weight for 5/8" Drywall
6" x 6"	152 x 152	3.41 Lbs	3.75 Lbs
8" X 8"	203 x 203	3.85 Lbs	4.41 Lbs
10" x 10"	254 x 254	4.36 Lbs	5.19 Lbs
12" X 12"	304 x 304	4.94 Lbs	6.09 Lbs
14" x 14"	356 x 356	5.59 Lbs	7.11 Lbs
16" X 16"	406 x 406	6.31 Lbs	8.25 Lbs
18" X 18"	457 x 457	7.10 Lbs	9.52 Lbs
20" X 20"	508 x 508	7.96 Lbs	10.91 Lbs
24" X 24"	609 x 609	9.88 Lbs	14.05 Lbs
24" x 36"	609 x 914	13.26 Lbs	19.47 Lbs
24" X 48"	609 x 1219	16.35 Lbs	24.55 Lbs
36" X 36"	914 x 914	17.76 Lbs	26.93 Lbs



		Quantity	Width (W)	Length (L)	Comments/ Special Instructions
Client:					
Project Name:					
Location:					
Date:					
Approved By (please print):		Approved by (Signature):			